

viewTerra Base

Product information

Trademark

VWorldPowered is a trademark of VWORLD, SAS.

Publication

August 2018, Version 1.0

Contact

VWORLD

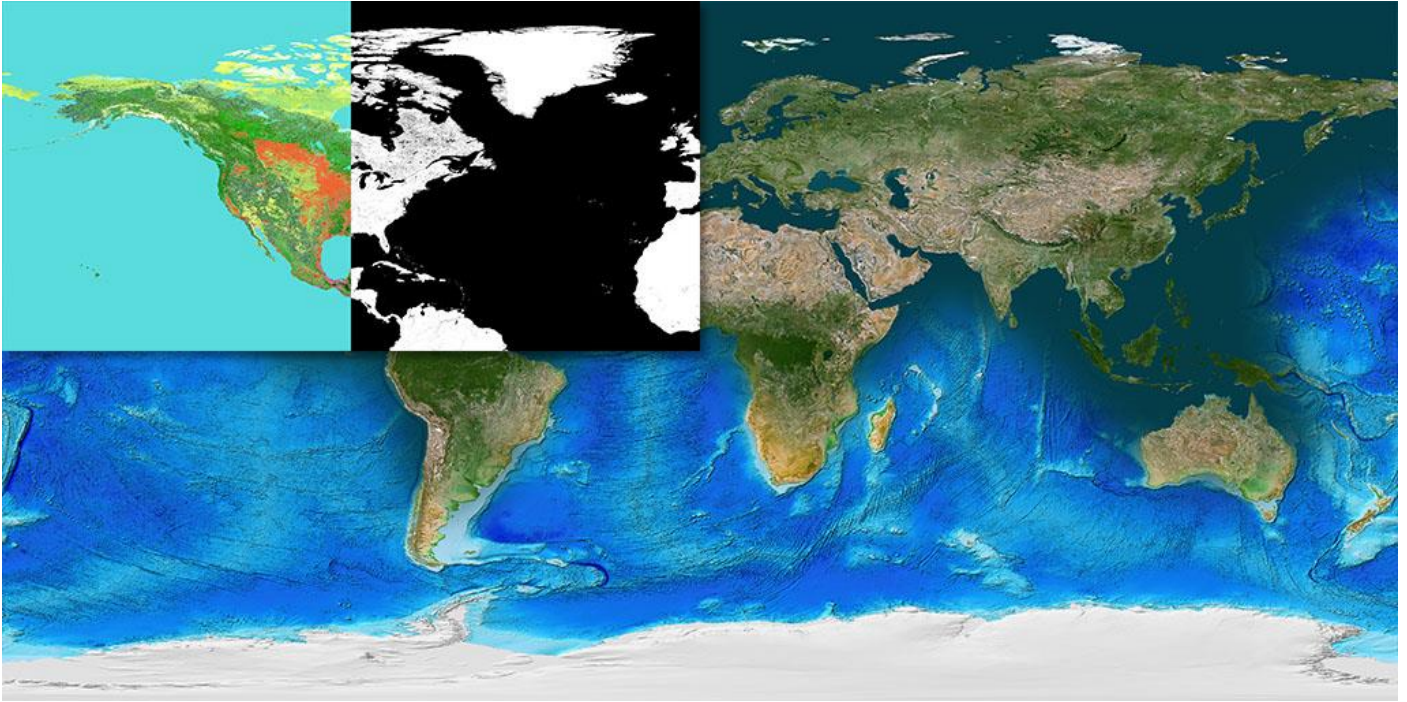
E-mail: info@vworld.fr

Web: www.vworld.fr

www.viewterrabase.com

viewTerra Base

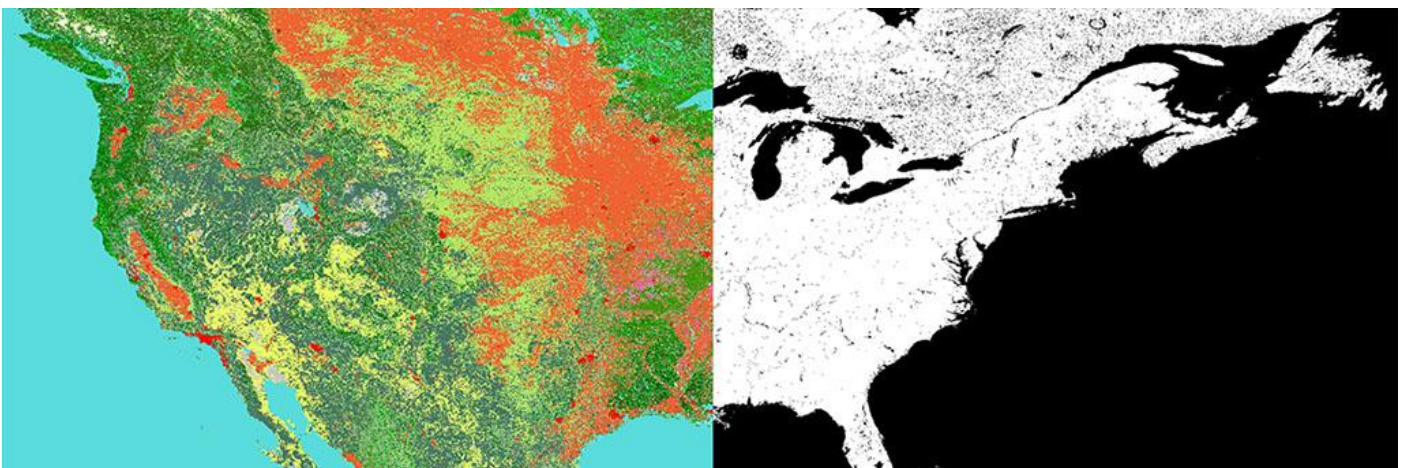
viewTerra Base is a set of combined whole Earth mosaics, including Antarctica: a 15m global true-colour imagery mosaic, built from Landsat 7 satellite imagery, accompanied by a 90m global elevation/bathymetry mosaic and a 29m global Land Cover mosaic.



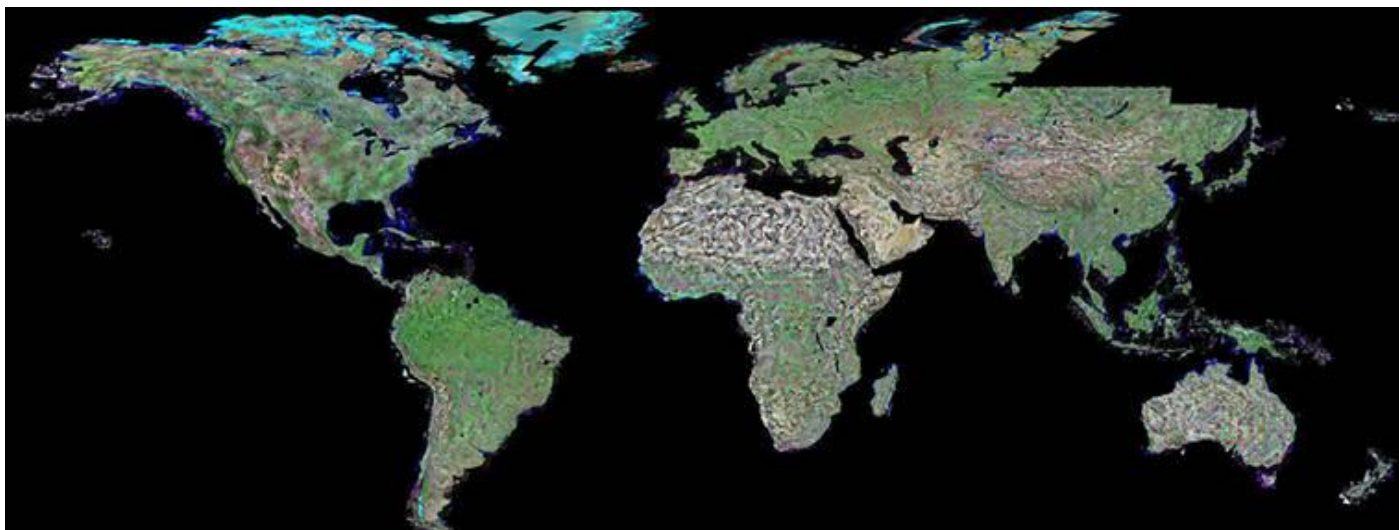
The 90m global DEM mosaic derives from best available data, allowing to make up for the missing data in the SRTM version and provide for more accurate coastal regions. The DEM mosaic is available in GeoTIFF and viewTerra Platform format.

Bathymetry (seabeds) at a 90m resolution is also supplied in viewTerra Platform format, resampled from the 928m SRTM Plus bathymetric data. It comprises 90m precise data around all US coastlines, and 180m precise data around all European coastlines, in the White Sea, the Barents Sea, the Greenland Sea, the North Sea, the Baltic Sea, the North Atlantic Ocean part, the Mediterranean Sea, the Black Sea and the Hawaiian Islands.

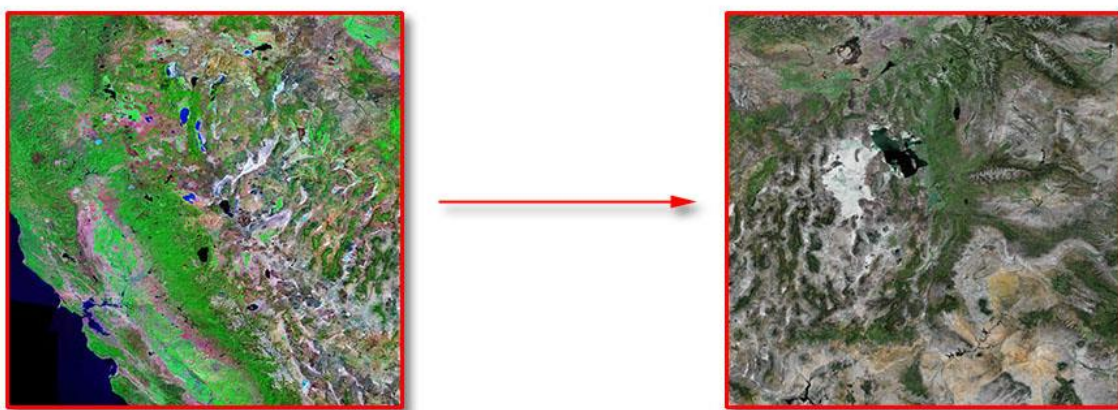
The 29m global Land Cover mosaic is based on various sources (USGS GLC 2000, Corine, Global Forest Change, SRTM Water Body), which comprises a hundred different classes, including percentage of forest cover information, as well as a layer indicating the presence of water, in order to accurately locate all water bodies: oceans, lakes and rivers. It is supplied in viewTerra Platform format.



The RGB mosaic is built from Landsat GeoCover 2000- 15m false-colour data (7,4,2 channels). It is available at 29 metres in viewTerra Platform format, and at 14,5 metres in GeoTIFF format.

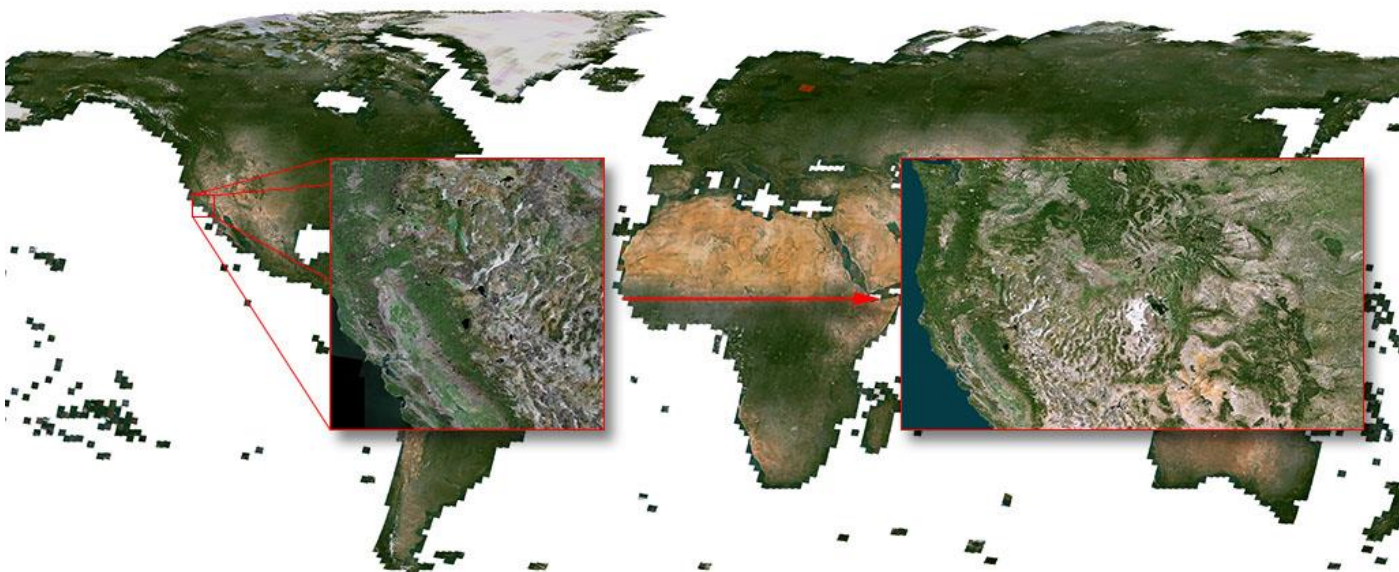


After several treatments allowing to rebuild the RGB (3,2,1) channels,



a colour treatment, which uses the RGB channels of the true-colour Global Mosaic image, and a series of manual treatments are used to get homogeneous colours and reduce the cloud cover percentage, for underwater lands as well as oceans and coastlines.

This allows to combine accuracy and homogeneity of the GeoCover mosaic while obtaining a very realistic result in true colours.



A version 2 of the RGB mosaic has been finalised in 2017 so as to get an almost entirely cloud-free mosaic, notably over tropical and equatorial regions.
This treatment makes use of two additional channels (infrared and near infra-red).

